

MODEL UNICAP 150

Capper

fascinating tops



- Heavy duty construction
- Timing belt driven
- Stainless steel support frame
- Four sets of spring-loaded tightening discs
- Pneumatic torque control
- Choice of various cap feeders
- Allen-Bradley PLC and HMI controls
- Speeds up to 200 cpm

Automated with
**Rockwell
Automation**
Allen-Bradley Rockwell Software



This versatile in-line capper handles a wide range of containers at speeds up to 200 containers per minute and offers a quick and easy changeover routine that maximizes production flexibility.

NJM
Packaging

A Century of Packaging Expertise

Model UNICAP 150 Capper

Technical Specifications

Standard Features Continued

- cGMP stainless steel base
- 3/4" hp motor for belts and discs
- Fully adjustable container holding belts
- Lexan safety guarding with interlock
- No tool belt adjustment
- Remote jog

Available Options

- Adjustable chute and pick up
- Fixed pick up/tunnel assembly
- Press cap attachment
- Motorized height adjustment
- Spacing wheel and downstream back-up sensor
- Cap inspection (missing, skewed, foil) and reject station and confirmation
- Cap elevator/orienter feeding system
- 24" or 30" vibratory bowls for cosmetic caps
- Mechanical cap feeders

Container and Cap Criteria:

- Ideal for round, rectangular or oval containers
- Container height: from 2-1/2" (63mm) to 12" (305mm)
(min 2" (51mm) with slim belt)
- Container dia: min of 3/4" (18mm) to a max of 6-1/4" (158mm)
- Cap type: screw, snap, or child proof (in plastic or metal)
- Cap diameter: min of 3/4" (18mm) to a max of 3" (75mm)
- Clearance between tightening discs: max of 6" (150mm)

Cap Elevator Criteria *(for pharmaceutical caps)*

- Cap diameter: min 3/4" (18mm) to a max of 3" (75mm)
- Thickness: min of 1/4" (6mm)
- Output: 200-220 cpm (33/45 mm cap type 400 plastic)
200-300 cpm (33/45 mm cap type child proof in plastic)
200-220 cpm (33/45 mm cap type 400 metal)
- Hopper capacity: 3 cu. ft. (0.08 cu. m.) (optional: 9 cu. ft. (0.24 cu. m.))

Vibratory Bowl Criteria *(for cosmetic caps)*

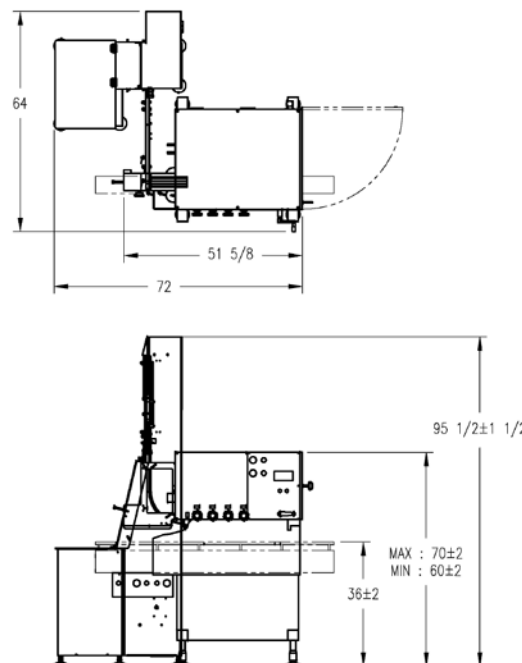
- 24" (610mm) 30" (762mm)
- Output: approx. 80/min. for 24" or approx. 100/min. for 30"
- Bulk hopper capacity: 4 cu. ft. (0.11 cu. m.)

Air & Electrical Requirements

- Power supply: 220VAC, 1 phase, 60Hz, 12A
- Air supply: 90 PSIG, less than 0.5 SCFM (without cap feeders)

Size

- Length: 3 ft. (0.91m)
- Width: 3 ft. (0.91m)
- Height: 5 ft. (1.52m)



Floor Plan

Dimensions shown are for basic machines and may vary depending on options. In view of our policy of continuing research and product improvement, actual specifications may vary from those shown. Please consult with an NJM Packaging representative regarding your specific requirements.

All NJM Packaging equipment is covered by a one year warranty on parts. A comprehensive nationwide service, parts, and sales support program is available for the life of your equipment. A customized Preventative Maintenance Program for this equipment is also available.

Contact our Customer Service Department at (603) 448-3940 for more information.

This equipment can be purchased separately or as part of a fully integrated packaging line. Contact your sales representative for full details on other packaging equipment and complete turnkey line integration services.

Protected by one or more U.S. and foreign patents.



A Century of Packaging Expertise

USA 56 Etna Road
Lebanon, NH 03766 USA
1-800-432-2990

CANADA 5600 Kieran, Montreal QC
Canada H4S 2B5
1-800-811-6990
www.njmpackaging.com

Copyright © 2011 NJM Packaging

Authorized NJM Packaging Sales Representative

